

High-end fluorescent microscope with ultrafast
precise liquid autofocus and cell counting software

MUCH MORE THAN A SIMPLE SOMATIC CELL COUNTER

Lactoscan Somatic Cell Counter

Embedded printer

10" fully functional
touch screen tablet

Test results within 20 to 60 seconds



SPECIFICATIONS

Analysis
time: < 1 minute

Capacity: > 60 tests per hour

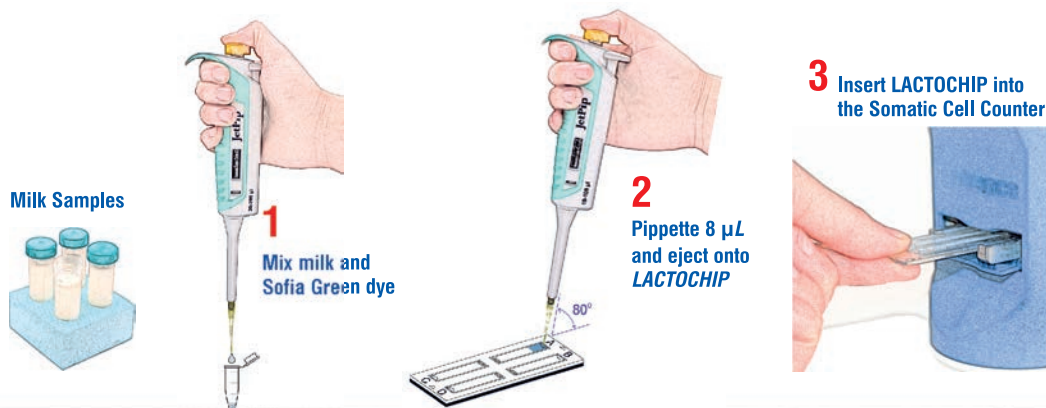
Measuring
range: 10 000 to 10 000 000 cell/mL

Deviation: SCC (cell/mL)	CV%
100 000	5%
400 000	3%
600 000	2%

New

**DETECTION OF
YEAST MASTITIS!**

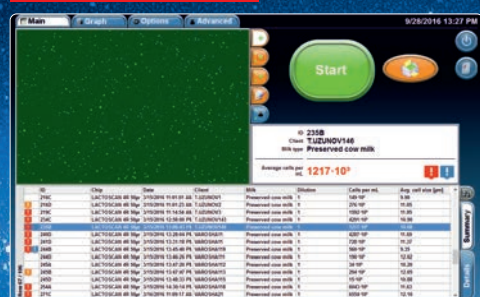
Accurate Somatic Cell Counting in three simple steps:



KEY FEATURES:

- Simple in operation
- Fast somatic cell analysis
- Accurate and reliable results
- Portable and compact design
- Low maintenance cost
- One year full warranty

Results are color coded



LACTOSCAN SCC STARTER KIT



- ! **Clinical Mastitis** > 400 000 cell/mL
- ! **Subclinical Mastitis** 200 000 ÷ 400 000 cell/mL
- **Healthy** < 200 000 cell/mL
- ! **Yeast mastitis**

**THE WORLD'S
LOWEST COST
PER TEST OF IMAGE
FLUORESCENCE
SOMATIC
CELLS COUNT**

This project is
co-funded by the
European Union



Improve your herd's
udder health
See with your eyes
what the others don't see

ENVIRONMENTAL CONDITIONS:

Ambient temperature: 10 - 40 °C
Milk temperature: 1- 40 °C
Relative humidity: 30 - 80 %

ELECTRICAL PARAMETERS:

AC voltage: 220V/ 110V
DC voltage: 12V
Power Consumption:
30W max

MECHANICAL PARAMETERS:

Dimensions
(W x D x H):
390 x 300 x 260 mm
Weight < 6 kg

Plastic
cover box

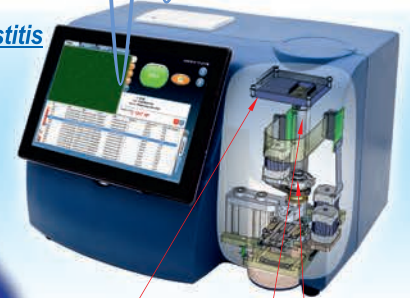
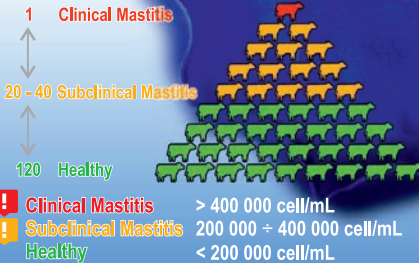
Detects subclinical
and clinical mastitis in
single teat of the udder



The iceberg of mastitis

**CLINICAL
MASTITIS**

**SUBCLINICAL
MASTITIS**

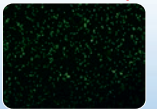


CCD camera Ultrafast precise liquid lens autofocus Fluorescent microscope

Somatic
cell images



100 000 cell/mL



7 000 000 cell/mL

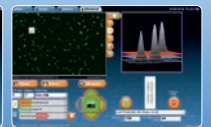
3 working modes



Main



Graph

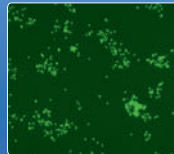


Advanced

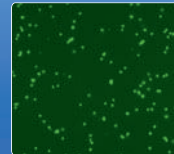
Indication of different mastitis and pathogens



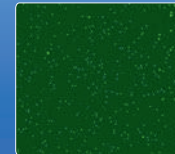
Normal milk 100x10³ cell/mL



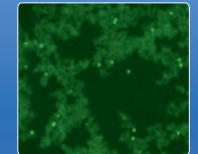
Staphylococcus mastitis



Streptococcus mastitis

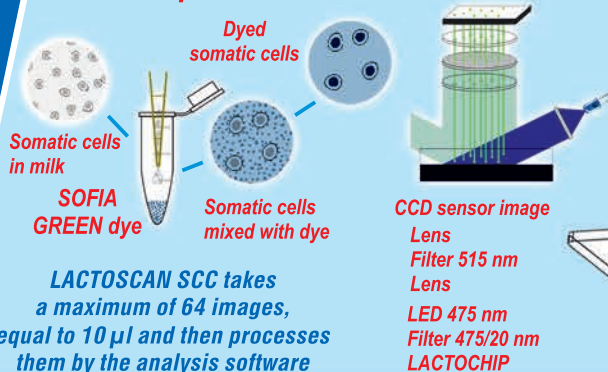


Yeast mastitis

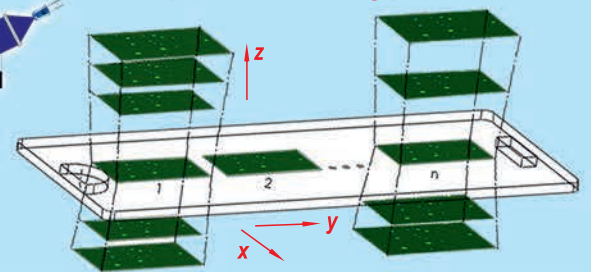


Mycoplasma mastitis

The Principle of LACTOSCAN SCC



Unique, 3D, multi-image,
patent application protected,
sequential scanning process

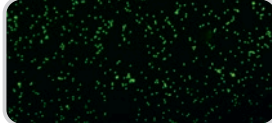


LACTOSCAN SCC

compare to

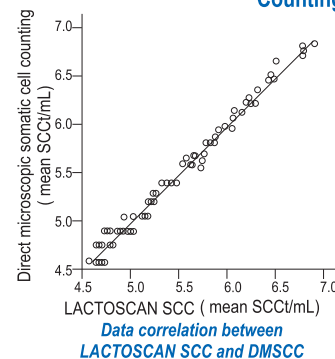
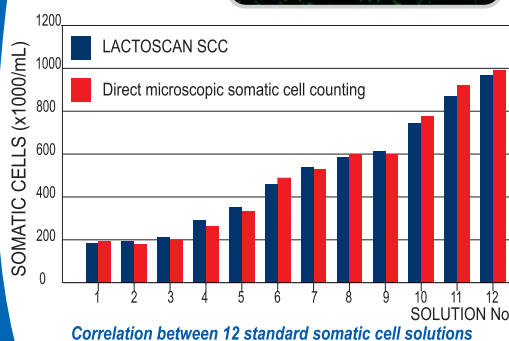
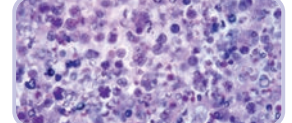
DMSCC

Direct fluorescent,
low magnification
microscopic
somatic cell counter



Image

Direct
Microscopic
Somatic Cell
Counting



	LACTOSCAN SCC	DMSCC
SCC (cell/mL)	*CV %	*CV %
100 000	5 %	7 %
400 000	3 %	5 %
600 000	2 %	4 %

* Coefficient of Variation

Comparison of deviation

distributors:

ambifood®